

SPITZER RANCH, LLC

FALL 2018 NEWSLETTER

Email: srbulls@outlook.com WEBSITE: www.srbulls.com

Greetings to our Customers and Friends,

A quick update on **Spitzer Ranch, LLC and the Spitzer Family**. Since many of you have been customers for many years (some for well over 30) we will give only the “Cliff Notes” version of our happenings. Our last Bull Sale was held in February 2016 at the ranch in South Carolina. We have been Brangus Breeders for 36 years, initially selling bulls by private treaty and then conducting our Annual Bull Sale for 23 years in SC. Tricia and I were getting a few years older; we had sons who wanted to be more involved but were unable (or unwilling) to move home; we had lost all our rented land and were unable to purchase additional land close at hand.

Therefore, we made a decision and dispersed our entire cow herd – everything that was carrying a pregnancy. We saved the best half of the heifer calves, formed SPITZER RANCH, LLC with Ben and Lauren and Dr. Brian and Loretta, bought some land with Brian and Loretta and moved twenty-two First-Calf-Cows to KS. Yep, after a lifetime we were starting over, but with the nucleus of the best genetics we had ever produced. Since then we have been blessed to rent quite a bit of land and, while we aren't totally back yet, we are getting there (we bred slightly over 100 females spring of this year). We have been rebuilding from those 22 heifers and a few embryos out of some of the best of the cows we sold. Yes, Patricia and I are still in SC until we get this place sold. Seems like we are doing a lot of driving as we were in KS three times last year and will be there twice this year. However, we have no worries as Dr. Brian, Loretta and four Grandkids do a great job with cows.

Our 2016-born bulls were sold under contract and of the 2017-born bulls, we kept only a few of the very best and steered well over one-half. We were then asked to consign SIX BULLS to what we hope is an annual event in Uniontown, AL on FRIDAY OCTOBER 5, 2018. We would also direct you to www.srbulls.com where there is additional information concerning us and our program.

The Spitzer Family has been producing Brangus bulls for over 36 years now and have been highly focused on producing in demand Curve Bender bulls for the profit minded commercial cattleman. Along the way we have placed several bulls into AI studs and always have a bull or two sell to other Registered Brangus Breeders. We were leaders in the industry in coining the name Curve Bender Bull with our definition of a **True Curve Bender** as a **low BW EPD** and yet **high YW EPD**. That takes care of the two most important factors in beef production in that a low BW always means **more calves born alive** and a high growth rate is your **sale weight at**

weaning time. Additionally, there is now excellent data from a research study at MARC, Clay Center, NE that shows that this selection program **reduces frame score** in the cow herd while still having increased growth potential. Also, we have known for a long time that a lower BW (provided that calf has a strong genetic potential to grow) is always easier on the cow. Data would conclude that her days from calving to re-cycling will be shorter and pregnancy rates greater.

Spitzer Ranch, LLC has never waived from pursuing our goals because of what is “trendy” or “fashionable” at the time and have avoided the lose-lose attitude of the “popular bull of the month club”. We have a steadfast adherence to the Professional Cattlemen’s demand for profit driven cattle. We totally embrace a philosophy grounded in the thoughts of objective selection of cattle for economically relevant traits that enhance profitability; and a total orientation to the needs of the commercial beef industry. We are confident you will continue to like our program and our bulls. Come to this sale expecting to see a super set of honest, solid bulls with the proven reliable genetics to put pounds on the ground and dollars in your pocket. A bonus will be the productivity of the females our bulls will put back in your cow herd.

This NEWSLETTER contains an excel file with the EPD profiles on the 6 bulls consigned. We took the liberty of highlighting in yellow individual EPDs in Ranked in THE TOP 50% (and many rank considerably higher than that) of the entire Brangus breed for traits we think are the most important to success. Those would be LOW BW, HIGH YW, GREATER TM, LARGER REA and INCREASED %IMF. Please also note that because we have collected DNA information on 3-5, or more, generations of sires used and have DNA profiles on at least 2 generations of dams, the accuracy figures on these traits are considerably higher than you are used to seeing on Non-Parent 18-month-old bulls. In fact, all BW EPDs have accuracy figures of about .50 which should give a great deal of confidence in those BW EPDs.

Ben Spitzer will be at the sale and can bid on bulls strictly by your direction if that is easier for you. Seems like every year we had our SC Bull Sale about 1/3 of bulls were purchased sight unseen, including many we sent to repeat buyers.

Please give Ben Spitzer 864/723-3779 or Doc Spitzer 864/710-0257 a call for any clarification or additional information on this set of Spitzer Ranch, LLC Age Advantaged Bulls.

Sincerely, John Spitzer
For the entire Spitzer Family

*Profitable Genetics from
Performance Cattlemen*

Uniontown, Alabama

BLACK BELT

ANGUS & BRANGUS BULL & COMMERCIAL FEMALE SALE

OCTOBER 5, 2018 • 1 PM

LOCATION: ALABAMA LIVESTOCK AUCTION

Broadcasted by **DVAuction**
Broadcasting Real-Time Auctions

SALE FEATURES:

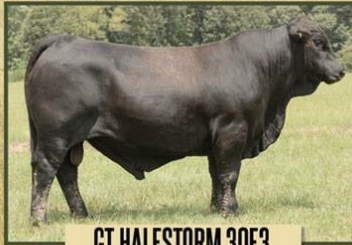
**DON'T MISS OUT ON THESE
AGE ADVANTAGE
BRANGUS & ANGUS BULLS**

- 30 2 Year Old Angus Bulls
- 25 18 Month Old Brangus Bulls
 - Sourced from Texas & The Southeast
- 100 Commerical Bred Heifers
 - Braford and Brangus F-1's, Brangus and Superbaldies
 - Sourced from Jones Farm



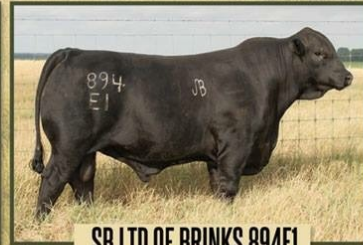
SB Z8 OF 1487 361E1

REG #: UB10350062
SIRE: FFR Z8 OF 1467 B75
MGS: TJM THREE D 302A



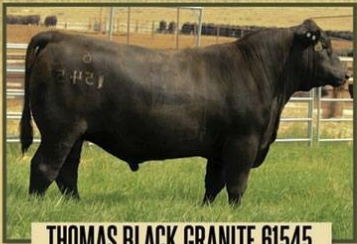
GT HALESTORM 30E3

REG #: R10374575
SIRE: MC HALESTORM 889C51
MGS: BWCC CRUISE 889Z28



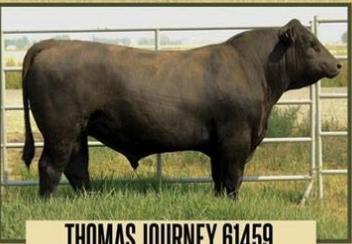
SB LTD OF BRINKS 894E1

REG #: R10350055
SIRE: LTD OF BRINKS 415T28
MGS: SUHN'S FOUNDATION 331Z28



THOMAS BLACK GRANITE 61545

REG #: AAA +19017661
SIRE: CONNEALY BLACK GRANITE
MGS: SUMMITCREST COMPLETE 1P55



THOMAS JOURNEY 61459

REG #: AAA +19020198
SIRE: WR JOURNEY-1X74
MGS: CONNEALY CONFIDENCE 0100

WILL SELL!

SONS SIRED BY

- MUSGRAVE AVIATOR
- KCF BENNETT ABSOLUTE
- WR JOURNEY-1X74

Thomas ANGUS RANCH

OFFICE: (541)524-9322
ROB THOMAS: (541)403-0562
BRYCE SCHUMANN: (785) 424-0360

**JONES
FARM**
JASON JONES
601.906.7600

hi point
sales + marketing

GARRETT R THOMAS • 936-714-4591
GARRETT.R.THOMAS@GMAIL.COM
ANDREW CONLEY • 706-781-8656
ANDREWBCONLEY@HOTMAIL.COM
HIPOINTSANDMARKETING.COM

PHN	Reg No.	BD	Name	CED	ACC	%RNK	BW	ACC	%RNK	WW	ACC	%RNK	YW	ACC	%RNK	Milk	ACC	%RNK	TM	%RNK
E707	UB10348445	2/26/2017	SR MOHICAN WARRIOR E707	6.3	0.37	15	-1.5	0.50	10	36	0.40	15	77	0.29	10	18	0.28	1	36	2
E717	R10348455	3/2/2017	SR CHOCTAW WARRIOR E717	2.1	0.37	85	1.5	0.50	70	40	0.41	10	82	0.29	5	12	0.25	20	32	5
E720	R10348458	3/4/2017	SR CHOCTAW WARRIOR E720	5.4	0.38	25	0.1	0.50	30	42	0.41	5	85	0.29	3	14	0.26	10	34	2
E754	R10358826	3/13/2017	SR WRANGLER WARRIOR E754	4.1	0.36	50	-0.1	0.47	25	22	0.39	65	51	0.31	45	18	0.30	1	29	10
E759	R10358825	3/23/2017	SR WRANGLER WARRIOR E759	3.5	0.36	65	0.5	0.47	40	22	0.39	70	45	0.31	60	17	0.30	1	28	15
E763	R10362162	3/15/2017	SR WRANGLER WARRIOR E763	3.7	0.38	60	0.6	0.47	45	24	0.39	55	52	0.31	45	19	0.30	1	31	10

BN	AVE	NON	PARENT	4.0			0.9			25			48			9			22	

PHN	Reg No.	BD	Name	CEM	ACC	%RNK	SC	ACC	%RNK	REA	ACC	%RNK	IMF	ACC	%RNK	FAT	ACC	%RNK
E707	UB10348445	2/26/2017	SR MOHICAN WARRIOR E707	3.1	0.28	95	0.95	0.36	10	0.67	0.38	10	0.14	0.30	15	-0.020	0.35	95
E717	R10348455	3/2/2017	SR CHOCTAW WARRIOR E717	3.8	0.26	75	0.48	0.36	50	0.54	0.39	20	0.01	0.31	55	-0.048	0.36	20
E720	R10348458	3/4/2017	SR CHOCTAW WARRIOR E720	3.2	0.27	95	0.73	0.37	25	0.58	0.39	15	0.07	0.31	30	-0.043	0.36	45
E754	R10358826	3/13/2017	SR WRANGLER WARRIOR E754	2.0	0.31	95	0.25	0.38	75	0.39	0.41	45	0.06	0.33	35	-0.039	0.38	60
E759	R10358825	3/23/2017	SR WRANGLER WARRIOR E759	2.5	0.31	95	0.20	0.38	80	0.32	0.41	60	0.06	0.33	35	-0.045	0.38	35
E763	R10362162	3/15/2017	SR WRANGLER WARRIOR E763	2.6	0.31	95	0.36	0.38	60	0.35	0.41	50	0.06	0.33	35	-0.038	0.38	65

BN	AVE	NON	PARENT	4.2			0.5			0.35			0.03			-0.040				
----	-----	-----	--------	-----	--	--	-----	--	--	------	--	--	------	--	--	--------	--	--	--	--

Please NOTE: E707 is a 50%BN:50%AN Ultrablack.

As soon as the sale catalog is available it will be posted to www.srbulls.com on Sales & News Page.

Of course you can always log on to gobrangus.com and enter the registration number to obtain Fact Sheet on each bull.

EPDs may vary slightly as IBBA now runs genetic evaluation every month.